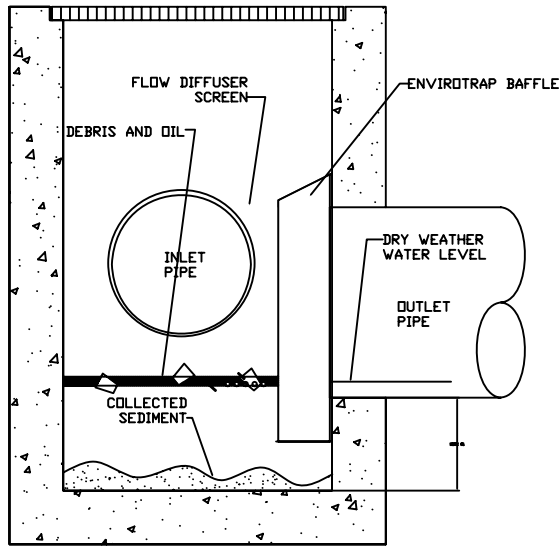
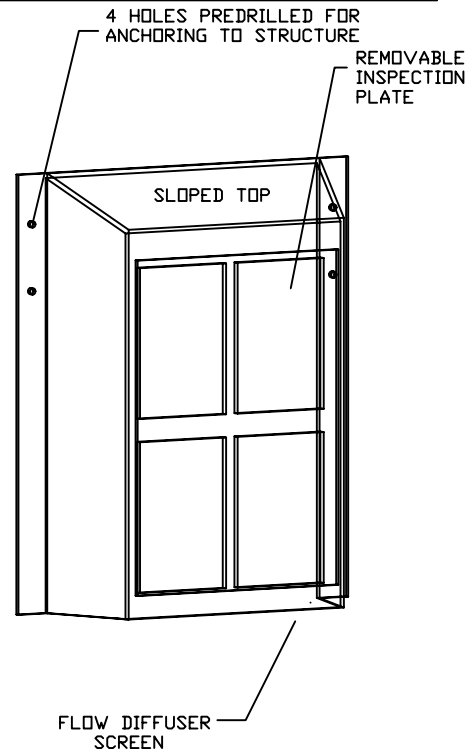


STANDARD INSTALLATION



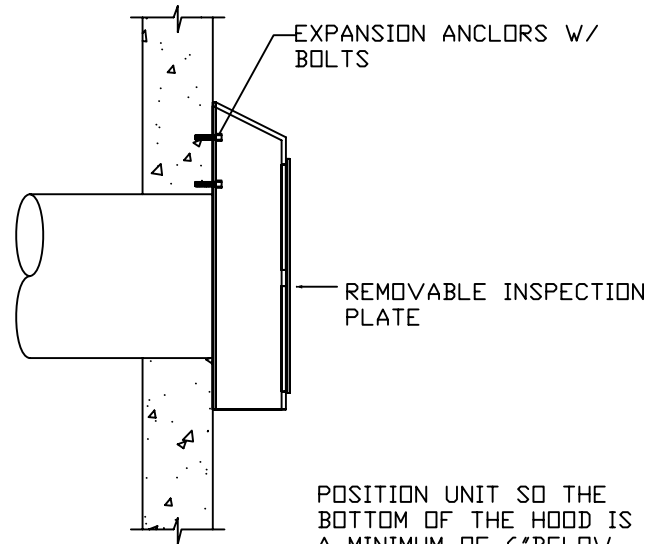
- NOTES:**
 1. SUMP DEPTH DEPENDENT ON DESIRED STORAGE CAPACITY. MINIMUM OF 12" FROM INVERT OF PIPE

CONFIGURATION DETAIL



INSTALLATION DETAIL

SHOWN WITHOUT FLOW DIFFUSER



POSITION UNIT SO THE BOTTOM OF THE HOOD IS A MINIMUM OF 6" BELOW INVERT OF PIPE.

GENERAL NOTES:

1. ALL MATERIALS MADE OF HEAVY DUTY POLYETHALINE PLASTIC.
2. LIGHT WEIGHT DESIGN FOR EASE OF HANDLING
3. THE SURFACE OF THE STRUCTURE WHERE THE UNIT WILL BE MOUNTED IS TO BE SMOOTH AND FREE OF LOOSE MATERIAL.
4. THE BOTTOM OF THE UNIT SHOULD EXTEND A MINIMUM OF 6' BELOW THE INVERT OF THE OUTLET PIPE
5. THE HOOD SHOULD BE SECURELY ATTACHED TO THE STRUCTURE W/ PROVIDED HARDWARE PER INSTALLATION INSTRUCTIONS.
6. REFER TO INSTALLATION INSTRUCTIONS FOR SPECIFIC INSTALLATION DETAILS.
7. ENVIROTRAP IS DESIGNED TO ACCEPT A FILTER ATTACHMENT IF DESIRED.
8. ALL ENVIROTRAP UNITS ARE TO BE SUPPLIED BY ENVIRONMENT 21, LLC OR AN APPROVED REPRESENTATIVE.
9. ALSO AVAILABLE FOR ATTACHMENT IS A FLOW RESTRICTOR AND FILTER MEDIA ATTACHMENT.
9. ENVIROTRAP HAS A PATENT PENDING.
10. GROSS POLLUTANT TRAP- CAPTURES HYDROCARBONS, COARSE SEDIMENT, AND FLOATABLES



1-800-809-2801

www.ENV21.com

ENVIRONMENT 21, LLC
 STORMWATER TREATMENT SYSTEMS

"ENVIROTRAP"
 TRASH & SEDIMENT COLLECTOR

SIZE	FSCM NO.	DWG NO.	REV
		ENVTRAP-STD	
SCALE		SHEET	