

UNISCREEN ONLINE SYSTEM / ADAPT TO SITE LAYOUT

DATE: 1-25-08
 DWG. NO.: Detail - Uniscreen-M

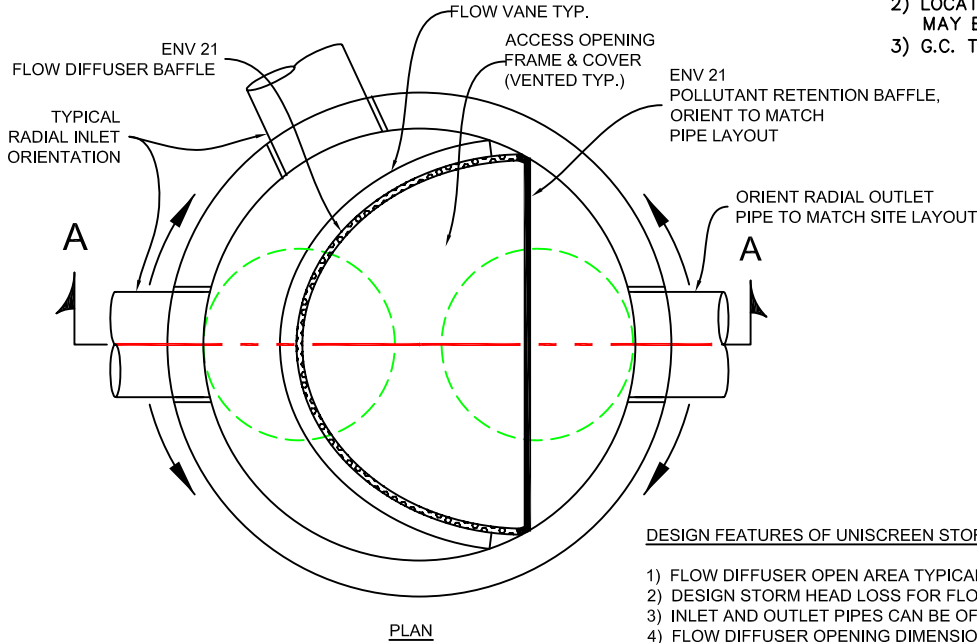
UNISCREEN MODEL #	D (mm)	MAX. S (M)	IMPERVIOUS AREA (hectares)	INLET PIPE (mm)	TREATMENT FLOW (lps)	PEAK FLOW (lps)
5SCM	1500	1.1±	0 - 1.5	300-375	0 - 60	160
6SCM	1800	1.2±	1.5 - 3.0	375-450	60 - 120	340
7SCM	2100	1.4±	3.0 - 4.5	450-600	120 - 160	460
8SCM	2400	1.5±	4.5 - 6.0	600-750	160 - 200	580
10SCM	3000	1.7±	6.0 - 9.0	750-900	200 - 300	800
12SCM	3600	1.8±	9.0 - 10.0	900-1200	300 - 400	950



CALL: 1-800-809-2801

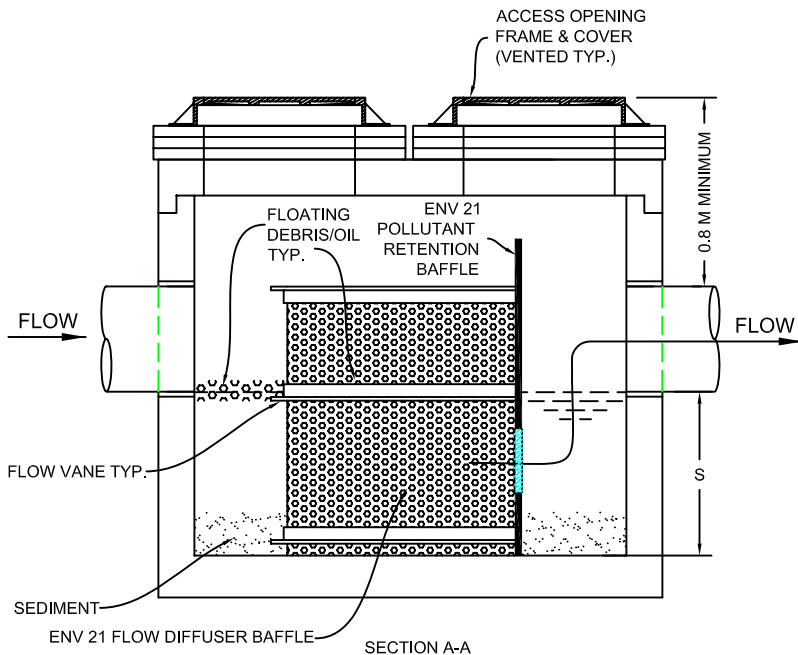
NOTES:

- 1) RAINFALL INTENSITY USED FOR TREATMENT FLOW = 20-25 mm/HR
 - 2) MAXIMUM OPERATING LOSS APPROXIMATELY 0.15 M
- MANUFACTURING NOTES:**
- 1) DESIGN OF INTERNAL SCREEN AND BAFFLE WALL PROVIDED TO LICENSED MANUFACTURER BY ENVIRONMENT 21, LLC.
 - 2) LOCATION AND SIZE OF MANHOLE OPENINGS MAY BE ADJUSTED BY LICENSED MANUFACTURER.
 - 3) G.C. TO GROUT INLET AND OUTLET PIPES.



DESIGN FEATURES OF UNISCREEN STORMWATER TREATMENT CHAMBER

- 1) FLOW DIFFUSER OPEN AREA TYPICALLY 8-10 TIMES FLOW AREA OF OUTLET PIPE.
- 2) DESIGN STORM HEAD LOSS FOR FLOW DIFFUSER MODULE TYPICALLY LESS THAN 0.8 M.
- 3) INLET AND OUTLET PIPES CAN BE OFFSET TO MEET SITE CONDITIONS.
- 4) FLOW DIFFUSER OPENING DIMENSIONS SPECIFIED BY ENV 21.
- 5) FOR IMPROVED SCREENING, SPECIFY OPENING DIMENSION OF 1.6 mm (4500 MICRONS).
- 6) SITE-SPECIFIC PRODUCT DETAIL DRAWING PREPARED BY ENVIRONMENT 21 AVAILABLE.



TREATMENT NOTES:

- 1) CPS (CRITICAL PARTICLE SIZE) REPRESENTS AN ESTIMATE OF THE SMALLEST SEDIMENT PARTICLE THAT CAN BE REMOVED AT 80% EFFICIENCY.
- 2) STORMWATER FLOWING IN THE INLET PIPE CAN EXPERIENCE SEDIMENT STRATIFICATION THAT PROVIDES IMPROVED REMOVAL OF SEDIMENT.
- 3) STORMWATER FLOWING IN THE INLET PIPE CAN EXPERIENCE FLOATABLES STRATIFICATION THAT PROVIDES IMPROVED REMOVAL OF FLOATING POLLUTANTS (OILS ORGANIC DEBRIS)

MODEL #	SCREEN AREA, S.M.
5SCM	3.3
6SCM	4.7
7SCM	5.5
8SCM	6.3
10SCM	9.2
12SCM	11.0

GENERAL NOTES:
 MANHOLE DESIGN SPECIFICATIONS CONFORM TO LATEST A.S.T.M. C478 SPEC. FOR PRECAST REINFORCED CONCRETE MANHOLE SECTIONS.

DESIGN LOADING: AASHTO HS20-44

PROPRIETARY INFORMATION: PATENTS PENDING - ALL RIGHTS TO ENVIRONMENT 21, LLC.